

The CBD's Technical and Scientific Cooperation (TSC) Landscape and the (sub)regional TSC Centres

Jorge L. Ventocilla

Royal Belgian Institute of Natural Sciences (RBINS)

CO-OP4CBD Training session / 22-23 April / Paris

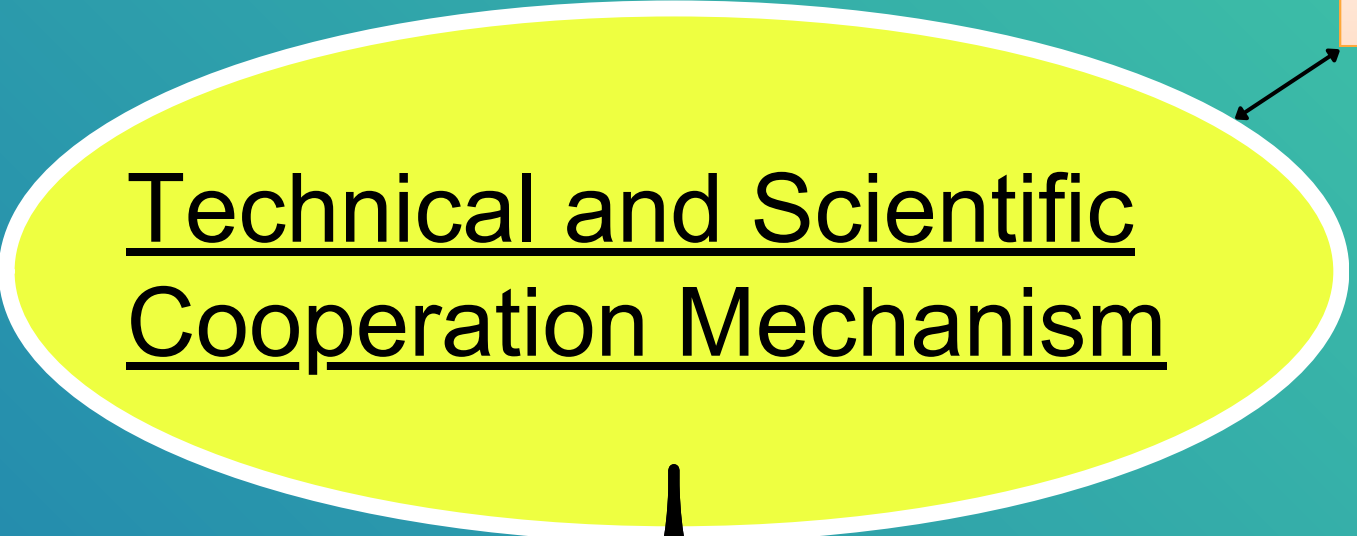


Views and opinions expressed are those of the author(s) only and do not necessarily reflect those of the European Union or the European Commission. Neither the EU nor the EC can be held responsible for them.



The CBD TSC Landscape

Central Portal



IAG TSC

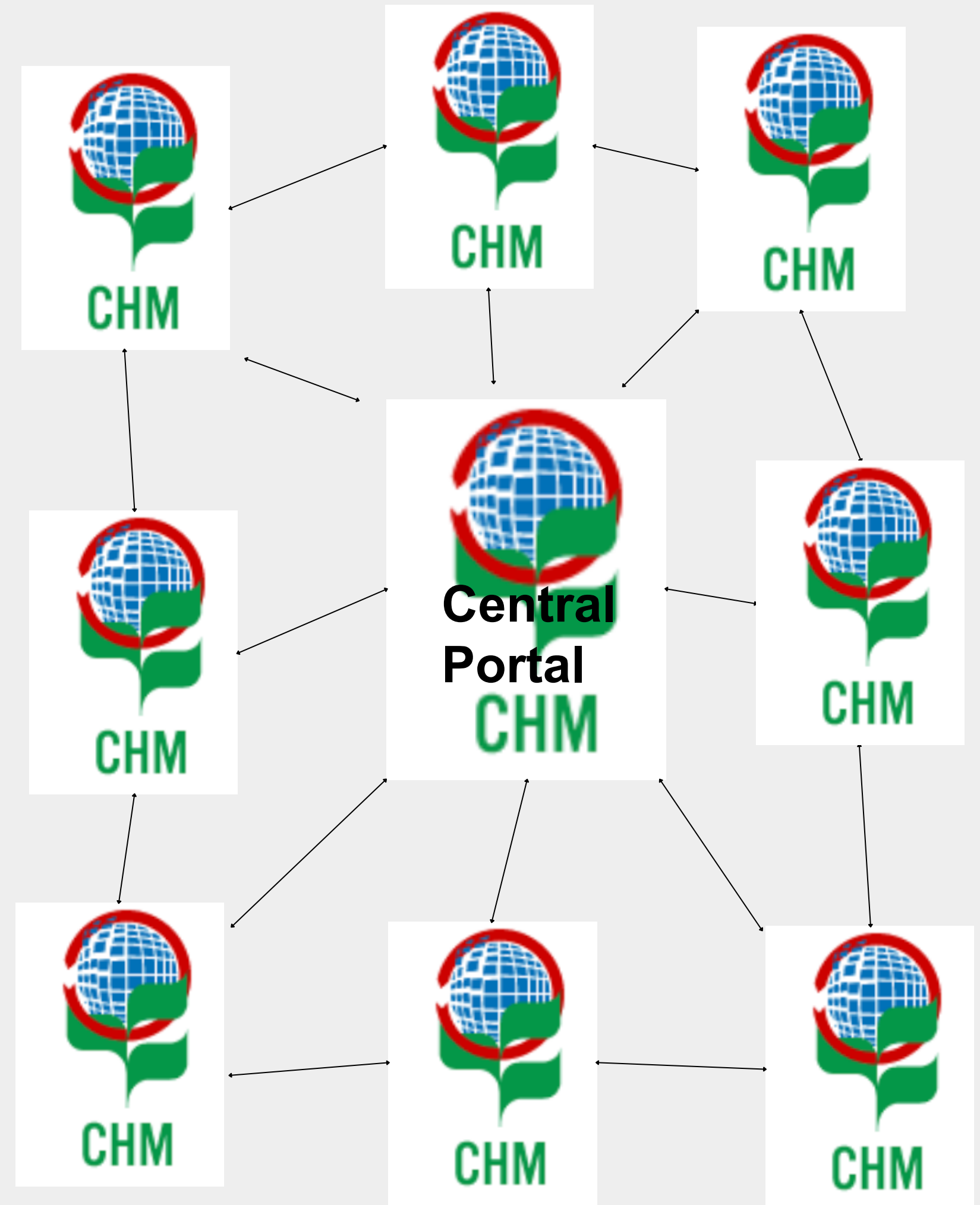
Global Coordination Entity

Regional TSC Centres

- Africa
- Americas
- Asia
- Europe
- Oceania

The Clearing House Mechanism

- Central Portal + National CHM
- What is a national CHM? According to CBD Decision X/15: a functional website that provides basic info on national contacts and on biodiversity within the country. More specifically CHMs are meant to promote and facilitate:
 - scientific and technical cooperation,
 - knowledge sharing, and
 - information exchange

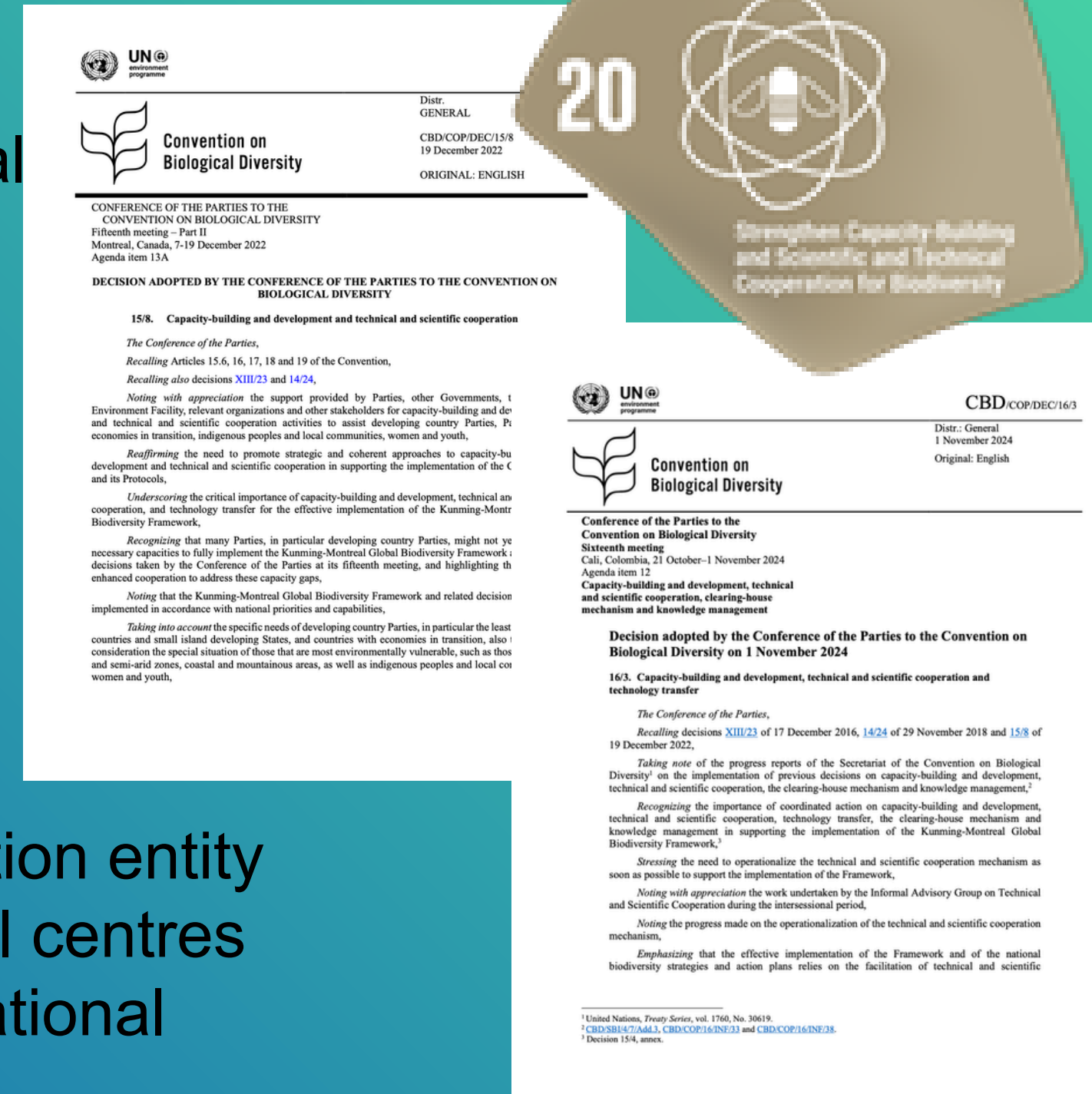




Technical and Scientific Cooperation Mechanism

Decision 15/8

“to promote and facilitate, on a demand-driven basis, technical and scientific cooperation and technology transfer among Parties and to enable Parties and relevant organizations to effectively utilize science, technology and innovation to support the implementation of the KM-GBF.”



Decision 16/3

- Welcomes the hosts of the regional TSC support centres
- Decides the SCBD will host the global coordination entity
- Adopts modalities for operationalizing the global coordination entity
- Encourages the global coordination entity and the regional centres to mobilize funding from various sources, including international and domestic, public and private sources
- Requests the centres to: Collaborate, submit activity reports, ...



The TSC IAG (2025-2027)




Eastern European States

us	Ms. Galina Mozgova
hia	Mr. Jan Plesnik
gary	Ms. Kinga Öllerer
menistan	Ms. Ejebay Kokanova

Western European and other States

alia	Mr. Karel Mokany
um	Mr. Han de Koeijer
pean Union	Mr. Gregoire Dubois
ed Kingdom of Great Britain and Northern Ireland	Mr. Philip McGowan

Indigenous Peoples and Local Communities, Women and Youth

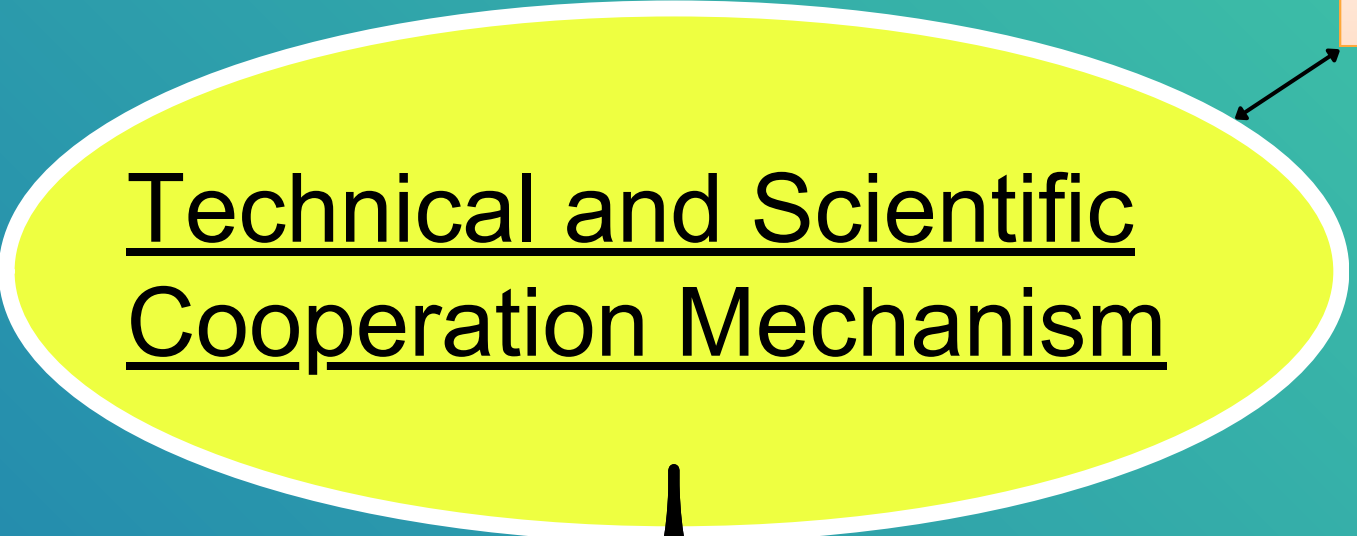
Center for Indigenous Peoples' Research and Development (CIPRED)	Mr. Biswash Praja
Asociación Ambiente y Recursos Naturales (FARN)/ Women's Caucus	Ms. Pamela Tapia Diaz
Global Youth Biodiversity Network (GYBN)	Ms. Mika Mei Jia Tan

Mandate: To provide strategic advice to the Executive Secretary and to relevant bodies under the Convention and its Protocols on practical measures, tools, and opportunities to promote and facilitate technical and scientific cooperation, technology transfer, capacity development, knowledge management and the clearing-house mechanism in support of the implementation of the Kunming-Montreal Global Biodiversity Framework.



The CBD TSC Landscape

Central Portal



IAG TSC

Global Coordination Entity

Regional TSC Centres

- Africa
- Americas
- Asia
- Europe
- Oceania

Technical and Scientific Cooperation support Centres (TSCCs)

AFRICA



- Central African Forest Commission (COMIFAC)
- Ecological Monitoring Centre (CSE)
- Regional Centre for Mapping of Resources for Development (RCMRD)
- Sahara and Sahel Observatory (OSS)
- South African National Biodiversity Institute (SANBI)

ASIA



- ASIAN Centre for Biodiversity (ACB)
- IUCN Asia Regional Office (IUCN Asia)
- IUCN Regional Office for West Asia (IUCN ROWA)
- Nanjing Institute of Environmental Sciences (NIES)

AMERICAS



- Alexander von Humboldt Biological Resources Research Institute
- Caribbean Community (CARICOM)
- Central American Commission on Environment and Development (CCAD/ SICA)

OCEANIA



- Secretariat of the Pacific Regional Environment Programme (SPREP)

CENTRAL ASIA



- IUCN Regional Office for Eastern Europe and Central Asia (IUCN ECARO)
- Regional Environmental Centre for Central Asia (CAREC)

European subregional TSCC

 European CBD Parties covered by the TSCC



3 coordination partners



**European
Commission**



IUCN Med



RBINS

Assisting Parties and major Stakeholder groups for **implementation of the KMGBF**

~~Coordinate and facilitate scientific,~~
technical, and capacity-building & capacity-development support, through coordination of a distributed and inclusive network of expert Knowledge hubs

~~Facilitate access to and utilisation of~~
knowledge products, tools, and best practices, through a **matchmaking process**

~~Liaise with institutions and mechanisms~~
recognised by the CBD, acting as **facilitators** for submission **of structured support requests** and ensuring transparent processing and allocation of these requests

~~Promote exchange of information and~~
potential collaborations with relevant international organisations & stakeholders

Coordination Group



45 CBD Parties in Europe, and/or major Stakeholder groups (youth, women, IPLC, ...)

Requests for KMGBF TSC support

Demand-driven interaction framework

Technical and science support

Coordinated network of decentralised Knowledge hubs for each KMGBF target



Provides advice and helps with awareness raising & capturing capacity needs and feedback
Composition

Advisory role

Annual meetings

2-year mandates

English as working language



- **6 Parties to the CBD, including both EU and non-EU members**
- **Major Stakeholder groups** (indigenous peoples and local communities, women and youth) and other relevant stakeholders
- **Funding agencies** (development cooperation agencies, foundations, ...)
- **Representatives from other organisations, including from the private sector** (depending on expressed interest)
- On an ad hoc basis, up to 2 invitations extended to representatives from non-European TSCC to foster cross TSCC collaboration

Demand-driven



Requests must be aligned to pre-identified **capacity needs** of Parties and major Stakeholder groups.

Structuring Requests



Parties and major Stakeholders groups submit requests using a **standardised template to ensure clarity and actionable support.**

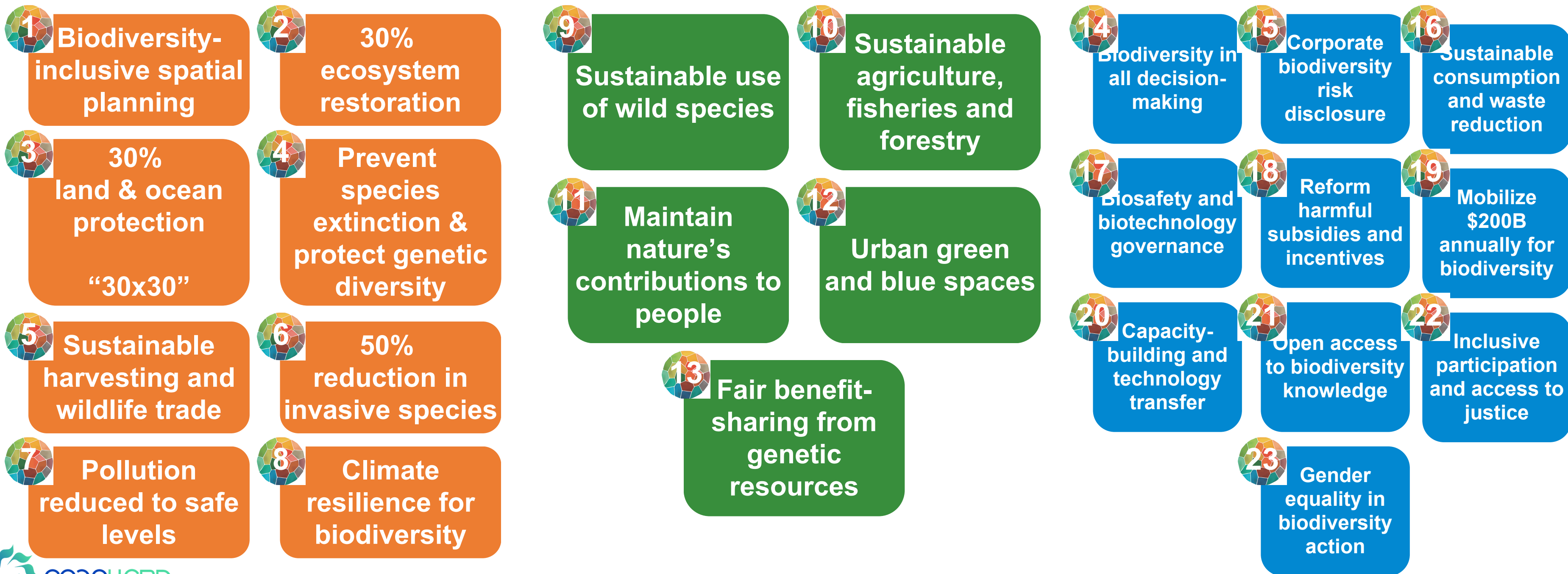


Supply-side: network of Knowledge hubs



CORE PRINCIPLE:

capitalising on existing knowledge, data, tools, networks, workflows



WE NEED YOUR HELP!

to better design the TSCC demand-driven interaction framework

On the Demand side Parties and major Stakeholder groups

by clarifying **your capacity needs** at:

- **individual** level
- **organisational** level
- **enabling environment** level

On the Supply side Support providers (Knowledge hubs)

European subregion

- **mapping existing assets** that could be fed into the TSCC with minimal effort (data, methods, reports, knowledge, videos, training materials, ongoing activities...)
- **defining possible operational models for Knowledge hubs** (governance and setup requirements)



Bringing Demand & Supply with a two-way interaction framework

Ensure support supplied by Knowledge hubs meets requests for support by Parties and/or major Stakeholder groups



Thank you for your attention!

Jorge L. Ventocilla

jventocilla@naturalsciences.be

